

Sterilization, Hygiene & Maintenance



# Biosecurity 100%, Reliable, Economical



ms

ms



Link to product videos

**OPTIMIZED**

for efficient and faster work processes

**FLEXIBILITY**

for better cycle selection

**LARGE CAPACITY**

for practices with a high volume of work

**ERGONOMIC**

for greater ease of use



**HIGH BIOSECURITY STANDARDS**

for your peace of mind

**MODULAR LEGS**

for installation in smaller spaces (depths of 45 cm)

**ANTI-DUST FILTER**

for extended service intervals

**CUTTING-EDGE DESIGN**

for simple cleaning of the equipment and a modern appearance

## Safe, easy and cost-effective sterilization

The new **MS** provides dentists with a high-quality yet affordable sterilizer, which prioritises biosecurity and cost-effective running, as well as speed and flexibility. The MS has been developed in line with US standard ANSI/AAMI ST55:2010 for table-top steam sterilizers.



**High biosecurity standards**

Guaranteed by the closed-door drying process with anti-bacterial filters and the use of clean water in each cycle.



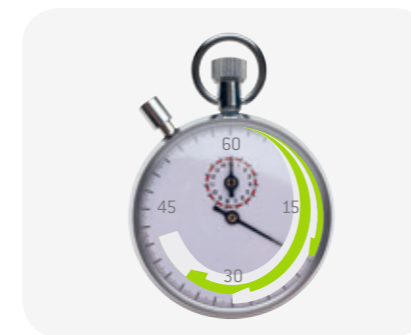
**Flexibility and time-saving**

The MS has cycles for both packaged and unpackaged products, with an automatic drying process.



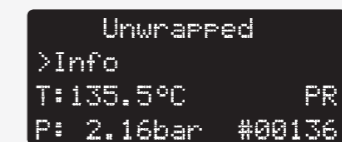
**Large capacity**

With its 22-litre chamber and room for five trays, the MS offers greater load capacity for practices with high volume of work.



**Optimized workflow**

Program the cycle to start at a set time to improve the efficiency of your workflow.



**Safety first**

Pressure and temperature controlled mechanically and electronically.



**Ergonomic**

The automatic filling and draining functions for the water tanks and the automatic door lock improve ergonomics and save you time.

# Technical data

Pictures are for illustrative purposes only. Additional equipment and accessories shown are not included as standard.

## MS sterilization cycles

	Unwrapped	Wrapped	Gentle
Temperature	134 °C	134 °C	121 °C
Holding time	6'	6'	15'
Total cycle duration*	21 – 25'	38 – 62'	55 – 59'
Max load	4 kg of unwrapped instruments	1 – 3 kg of wrapped instruments**	1 kg of wrapped heat-sensitive instruments or 4 kg of unwrapped instruments

\* Total cycle duration – the times quoted are for the 220 V model and vary depending on the initial conditions of the chamber (hot – cold).

The duration of the cycle may vary depending of the type and weight of the load, voltage, etc.

\*\* The default drying guarantees the sterilization and drying of 3 kg in 62' total time, placing 1 kg per tray.

The drying time may be manually reduced when processing 1 kg thus obtaining a total cycle time of 38'.



Type:	MS-22	
Chamber size:	22 l	
Power supply:	200 – 240 Vac 50/60 Hz; 8,75 A	100 – 125 Vac 50/60 Hz; 15 A
Power consumption:	1.75 kW	1.6 kW
Dimensions overall (W x H x D):	450 x 435 x 599 mm	
Weight (empty):	38 kg	
Mean sound levels (L <sub>WA</sub> ):	63 dB	
Main/Used water tanks:	4 / 3.5 l	
Working range:	7 cycles	
Usable space in chamber (W x H x D):	195 x 195 x 390 mm	
Connection type:	Serial port for printer + automatic water filling connection (optional)	

MS sterilizers were designed, certified and validated with the most stringent Directives and Standards:

93/42/EEC	Medical Device Directive	ANSI/AAMI ST55:2010	Table-top steam sterilizers	EN 61010-1	Safety requirements
97/23/EEC	Pressure equipment Directive	EN 61326-1	Electromagnetic compatibility	EN 61010-2-040	Specific requirements for steam sterilizer

