

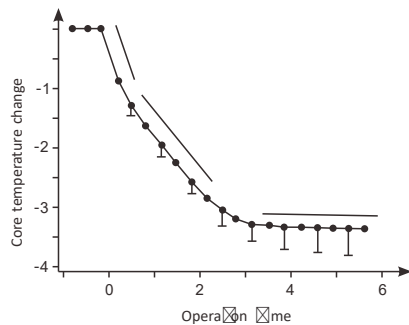
Model M600V > warming system



Perioperative
temperature management

What is the hypothermia?

Hypothermia is defined by Surgical Care Improvement Project (SCIP) as a core body temperature less than 36°C . It occurs for a number of reasons , including



- Anesthesia
- Patients getting cold on the ward when waiting to go to theatre
- The use of non-warmed intra-venous (IV) and irrigation fluids
- Operating room temperature
- Exposure of the body interior during surgery

The importance of maintaining normothermia

Maintaining a patient's normothermia is necessary to reduce the risk of adverse effects associated with hypothermia. Hypothermia can lead to significant complications:

Shivering

Arrhythmias

Coagulopathy

Increase the risk of surgical site infections (SSI)

Increased cardiovascular stress

Delay wound healing

Prolonged time to recovery

Model M600V warming system provides a comprehensive solution that can effectively prevent and treat hypothermia.



M600V system consist of Veterinary Warming System and warming blanket. This unit is connected by a rubber hose to blanket that is heated by circulating warm air, thus maintaining a patient's core body temperature.



Features

Safe

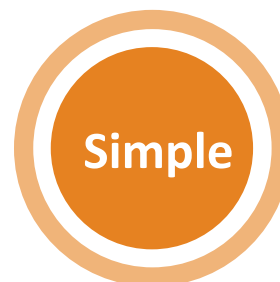
- Advanced dual temperature sensor design
- Fault alarms: over-temperature, under-temperature, filter maintenance
- Air filter to keep effective filtration
- Precise temperature settings controlled within $\pm 1.5^{\circ}\text{C}$

Powerful

- Reaching the set temperature within 5 minutes
- Particular heat output design to have quicker heat transfer
- Unique micro-holes on the surface of the blanket to keep heat evenly distribute
- Wide range of blanket shapes and sizes

Simple

- Intuitive operation, almost training free
- Can be clamped to an IV pole or placed on a hard surface

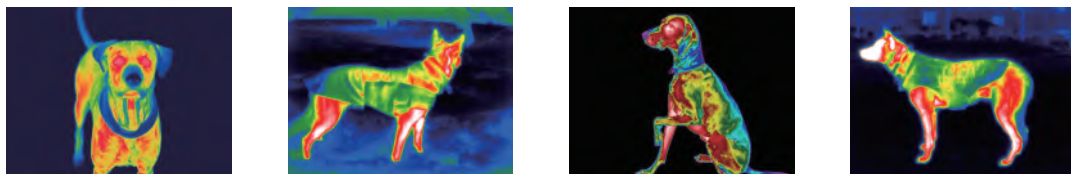




Application



Infra-red image of blanket showing uniform heat



Perioperative
temperature management



Specifications

Model No.	M600V
Temperature Modes	Five: 32°C, 35°C, 38°C, 43°C, Ambient air
Airflow Modes	High: ≥ 30 CFM
	Med: ≥ 28 CFM
	Low: ≥ 26 CFM
Interface	OLED Display
Noise	≤ 52 dB (High fan setting)
The Length of Hose	2m
Power Supply	220V, 50Hz
Weight	7.7kg
Controller Dimensions	Height: 33.0cm
	Width: 37.0cm
	Depth: 29.0cm



Distributed By
VetTech Australia
2/7 Bonz Place
SEVEN HILLS NSW 2147
1300339139