

**VetTech Australia**  
*Service is our Specialty*

Distributed and Serviced by -

VetTech Australia  
Unit 23/7 Hoyle Avenue  
CASTLE HILL NSW 2154

1300 339 139  
[www.vtaus.com.au](http://www.vtaus.com.au)



**Patient Warming and Cooling System  
User Guide**



Please carefully read the user guide before use.

**AIR-CONDITIONER MATTRESS CARE YOUR LIFE**

## TROUBLESHOOTING

If such condition like herebelow happens when consumer use the product, please solve them as exact herebelow tells. If still can not make it, please contact us and tell us detail of the condition.

Trouble	Possible reason	Troubleshooting
Can not start	no power	supply with power
	not connect the power	connect power
	fuse burnt up	a new fuse is needed
	can not start but led is on	it shows lack of water, please adding water into the tank
	remote is not so sensitive	new battery is needed
	can not work with all lights on	shut down the power, clean and dry the operation board and restart
Bad effect of warming and cooling	have noise come from control unit when running with not enough water in the tank	check the water level in the tank is under warning line or not, please adding water if under the warning line.
	adjust the temperature wrongly	adjust the temperature to higher or lower
	heat-absorber was covered and blocked by dirty and dust	take off the lid and clean it
Can not warm up and cool down	have stiff substance block the expire or inspire window of control unit	clean them
	have filar substance block expire inspire window of control unit	clean them
	water isn't enough in tank	adding water
If such condition like herebelow happens, please cease using the control unit promptly and cut off the power		
Troubles	fuse burnt up frequently	
	outside substance and water go to inside of control unit	
	remote lost sensitive or buttons is unnormal	
	control unit have unnormal smell or noise	

## TABLE OF CONTENTS

<b>Function introduction</b> .....	1
<b>Control unit main tech-parameter</b> .....	1
<b>Control unit and mattress installation instruction</b> .....	2
<b>A. Control unit appearance instruction</b> .....	2
<b>B. Mattress installation</b> .....	2
<b>Set up</b> .....	3
<b>A. Installation instruction</b> .....	3
<b>B. Collection between pad and machine</b> .....	3
<b>C. Turn on and add water</b> .....	4
<b>D. Control unit/remote control marks and directives</b> .....	4
<b>E. Control unit/remote control function reset</b> .....	6
<b>Usage notes</b> .....	8
<b>Maintenance</b> .....	9
<b>Troubleshooting</b> .....	11
<b>Accessories</b> .....	12

### Remarks: The meanings of various icons in user guide



It means the content of [possibility of causing hurt or property damage.]



It means to oblige the user to act exact as content of [constraint]



It means user can not act the content of [prohibition]

## FUNCTION INTRODUCTION

### Adjustable warm and cool, care health and sleeping

Our machine has frequency conversion microcomputer control system, it can adjust temperature from 20°C-48°C that human body needs, the mattress inside has pipe system made of silicone material for liquid circulation, it makes a space between human body and mattress which not only hasten circulation of blood, release strain of spine and bones, but also massage muscles to direct people into sleeping and eliminate troubles that caused by long time lying in the hospital after operation.

### Warm in winter, cool in summer, safety and trustworth

The liquid become warm and cool by semi-conductor chip. It can adjust the temperature that people needs in short time, it not only can cool down but also can replace traditional electric wire blanket, it not only can prevent bacteria reproduction, kill acarus, avoid weakness of sweating, eczema, waist sore caused by long time lying, but also avoid the danger from magnetic-wave produced by electric wire blanket, completely solve the problem of nose dry, skin itch and shed, chest frowsty and dizzy feeling etc.

### Magnetization system, environment protect

Machine magnetized system magnetize the circulating liquid, produce magnetic atmosphere, stimulate body point cure in magnetization, and speeding up blood circulation to hasten physical and chemical reaction of human body, help to cure heart disease, hypertension, spirit enervation etc, the liquid keeps circulating without any magnetic declination, improve many kinds of disease, physical therapy to built strong body, also running periodic disinfection.

## MACHINE MAIN TECH-PARAMETER.

Input voltage	AC220V	Rated frequency	50~60Hz
Start cooling watt	180W±10%	Start warming watt	200W±10%
Stay cooling watt	80W±10%	Stay warm watt	80W±10%
Noise	≤45dB	Life span	5 year



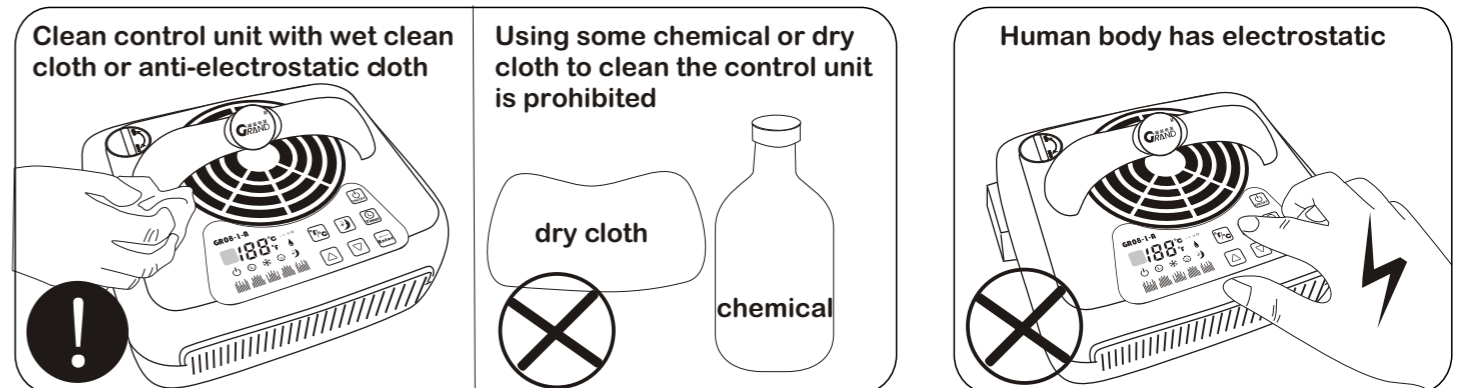
**Store control unit and mattress in the clean and dry place to prevent components from rotting or outside substances going into the control unit to affect its function.**



**If keep using please clean the control unit with clean wet cloth or electrostatic-proof cloth, do not use chemical reagent(rot components) or dry cloth(with electrostatic) to clean the control unit.**



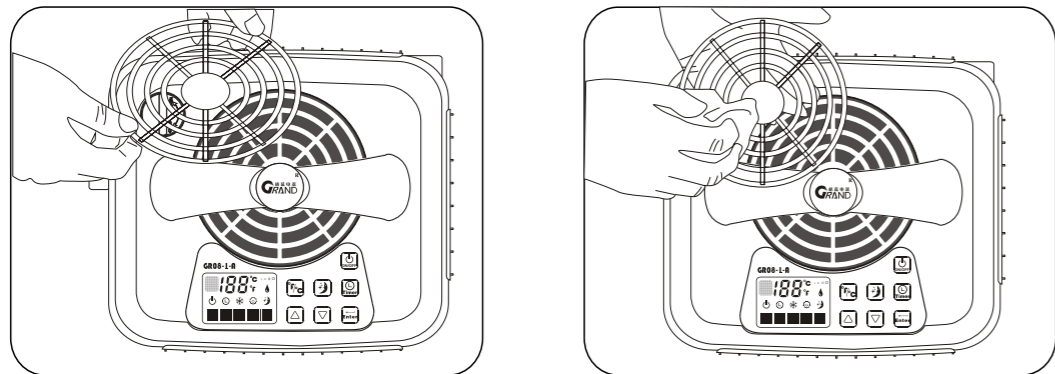
**In cold winter, the moving human body wear many clothes is easy to produce electrostatic, therefore please contact some conductable metal substance to release the electronstatic before operating the control unit.**



## MAINTENANCE

### A. Clean dirt of inspire window of control unit.

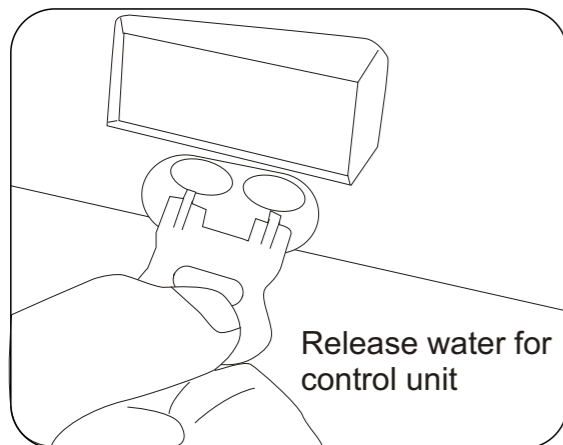
Control unit has lots dirt and dust around the fan if used for a long time which will affect function of control unit, user can take off the fan lid to clean or wash, then dry it up and refix to the control unit.



### B. Release water from control unit and mattress

If control unit is not used for a long time, there has dirt or deposit in the water tank, at this time please release the water and fill with new water. Turning on the control unit and let water circulate in mattress for couples of minutes, then release the water with the plastic key, after finish the release, re-fill the tank with new water, then release again and again repeat twice or 3 times.

If mattress pad is not used for long time, please release the water in the mattress with the plastic key.



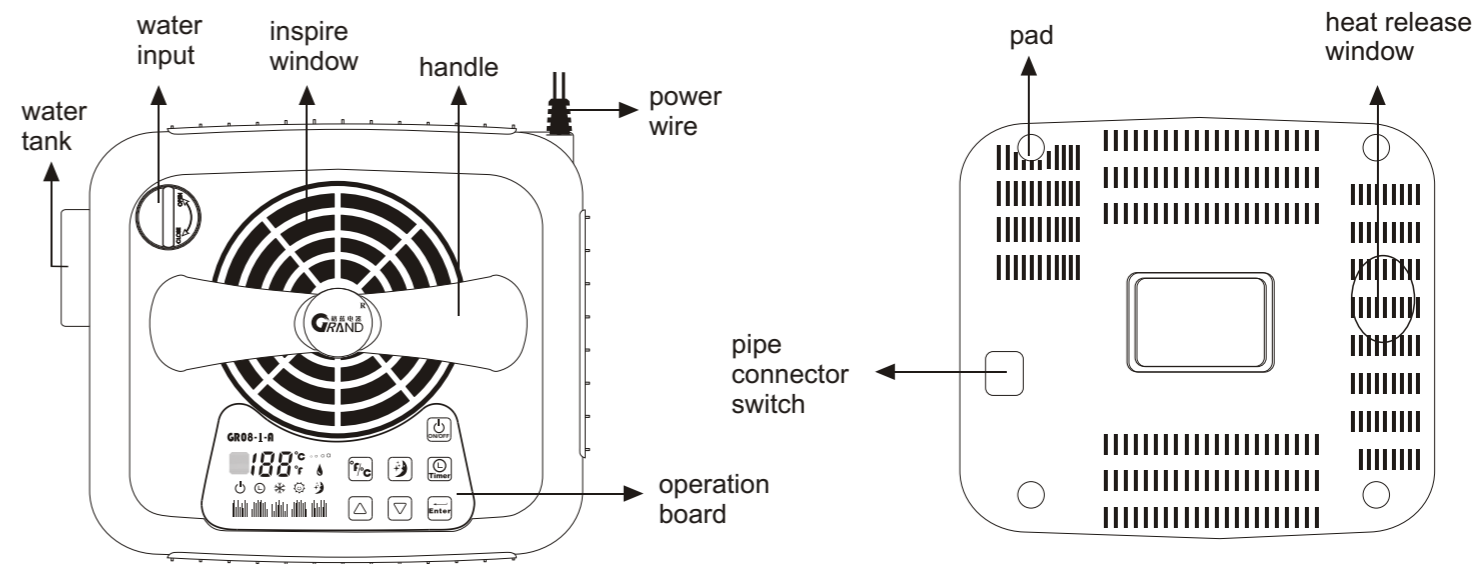
Release water for control unit



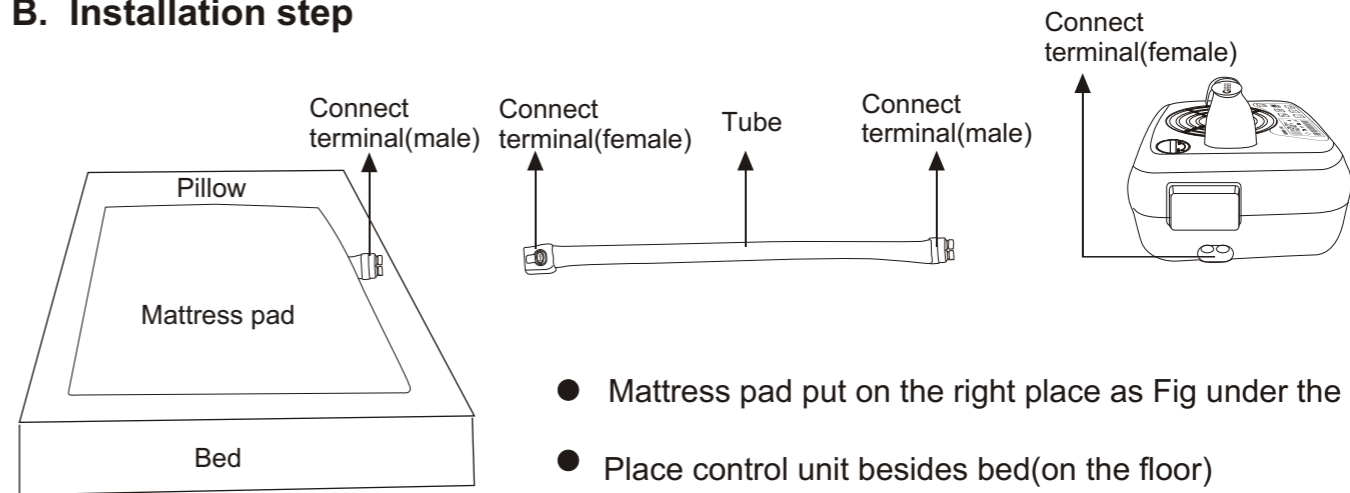
Release water for mattress

## CONTROL UNIT AND MATTRESS INSTALLATION INSTRUCTION

### A. Machine appearance instruction

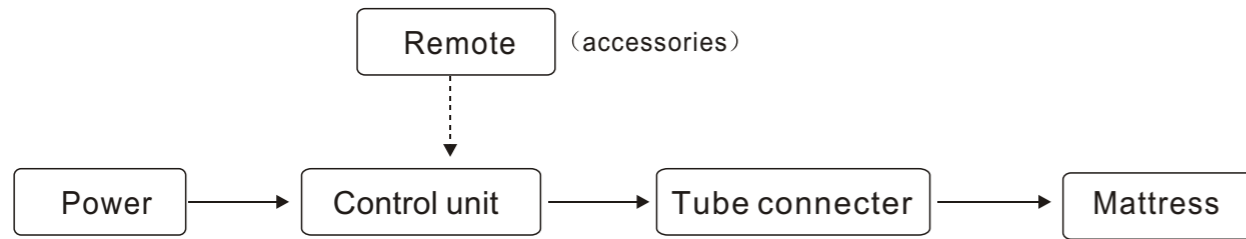


### B. Installation step



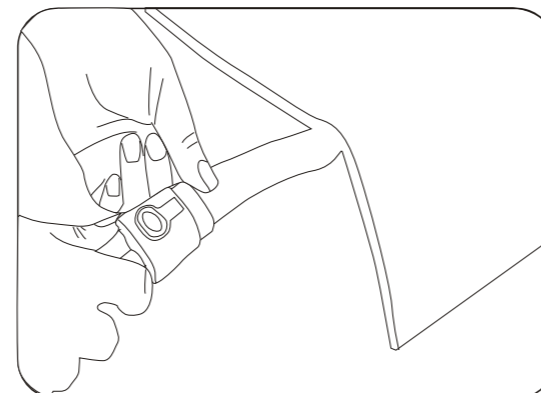
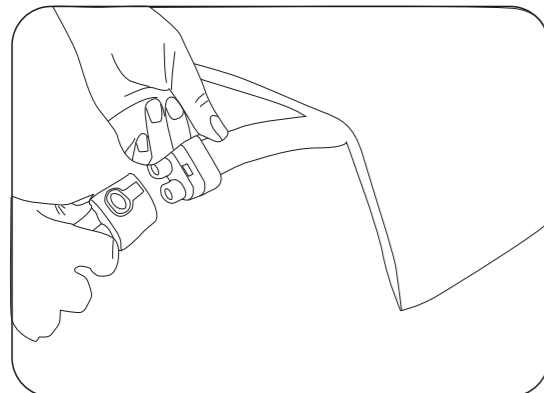
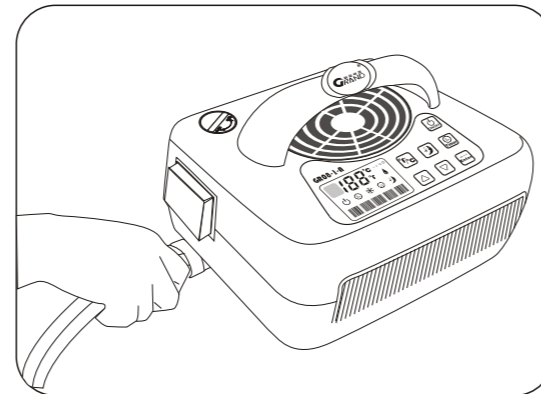
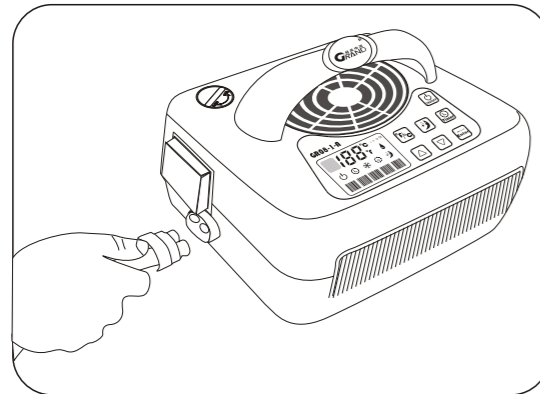
## SET UP

### A. Installation instruction



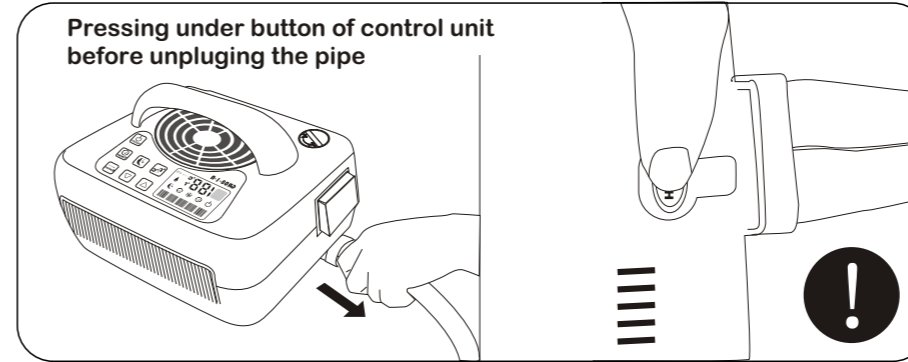
### B. Collection between pad and machine

- 1) Plug the male terminal of tube connector to female terminal of control unit
- 2) Plug the female terminal of tube connector to male terminal of mattress



## USAGE NOTES

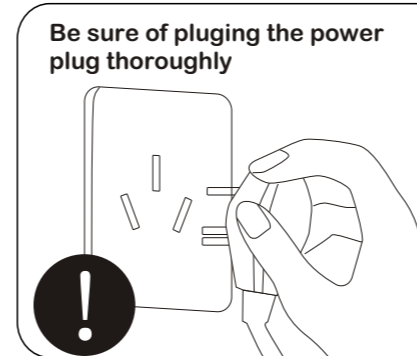
Pressing under button of control unit before unplugging the pipe



Placing other substances in 15 cm around the heat-releasing windows is prohibited.



Be sure of plugging the power plug thoroughly

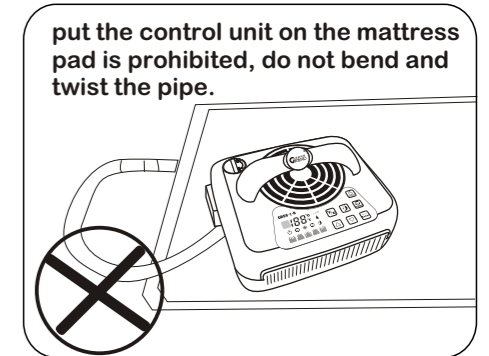


Do not break the electrical cable

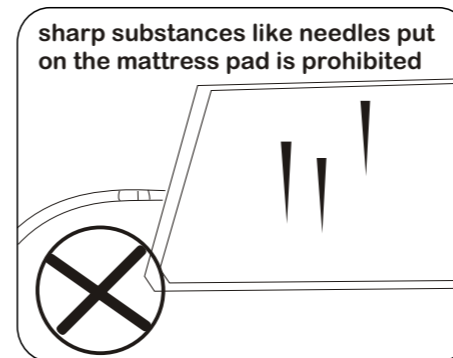
Do not change the cable and place around the heating substances, do not twist, bend tie with the cable, it may cause fire disaster, short circuit, electric shock event if use a broken power plug.



put the control unit on the mattress pad is prohibited, do not bend and twist the pipe.



sharp substances like needles put on the mattress pad is prohibited



sharp substances like needles put into the control unit is prohibited



pouring clean water into control unit and on the buttons is prohibited





### Special reminds:

1. User can adjust the temperature of mattress to the perfect health number according to indoors temperature and human body request.
2. Our suggested perfect temperature In summer is  $31^{\circ}\text{C} \pm 1^{\circ}\text{C}$ , in winter is  $35^{\circ}\text{C} \pm 2^{\circ}\text{C}$ . lower than  $31^{\circ}\text{C}$  or higher than  $37^{\circ}\text{C}$  is not suitable for long time sleeping, but good for medical therapy.
3. The mattress can be set to keep working on same temperature as to go well human body temperature to improve quality of sleeping and life
4. The sleeping mode function can be used if user have no idea about his suitable temperature, and the bunches of children, elders and disables who can not help themselves, but it can only be started on condition of set the control unit temperature to be higher or lower protect temperature range before you choose this mode.
5. Can not put the control unit works upon the mattress pad, and control unit is just for this mattress, for other purpose is prohibited.
6. Must keep for at least 5 minutes on switch between warming and cooling.

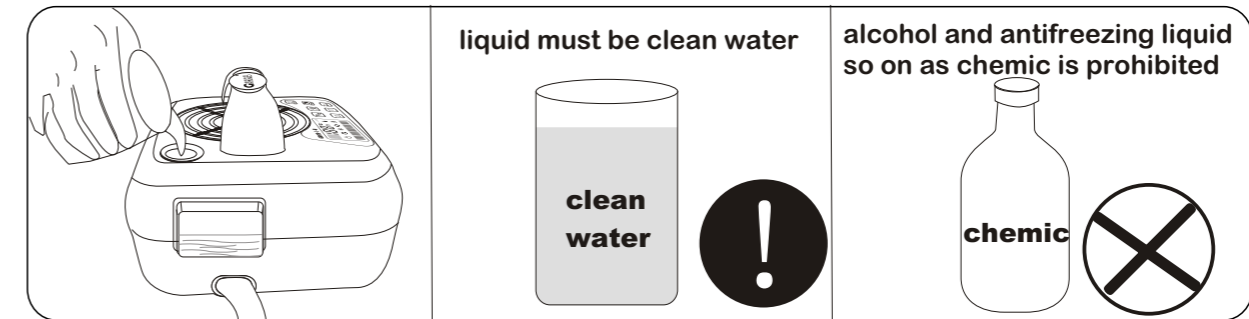
## SET UP

### C. Turn on and add water

Connect the power plug to AC220V/50HZ power, at the state of control unit not working, spin off the lid of water tank and fill water until the tank is full, then press power button to start control unit, and keeping adding water until the tank is full again, finally close the month with lid.

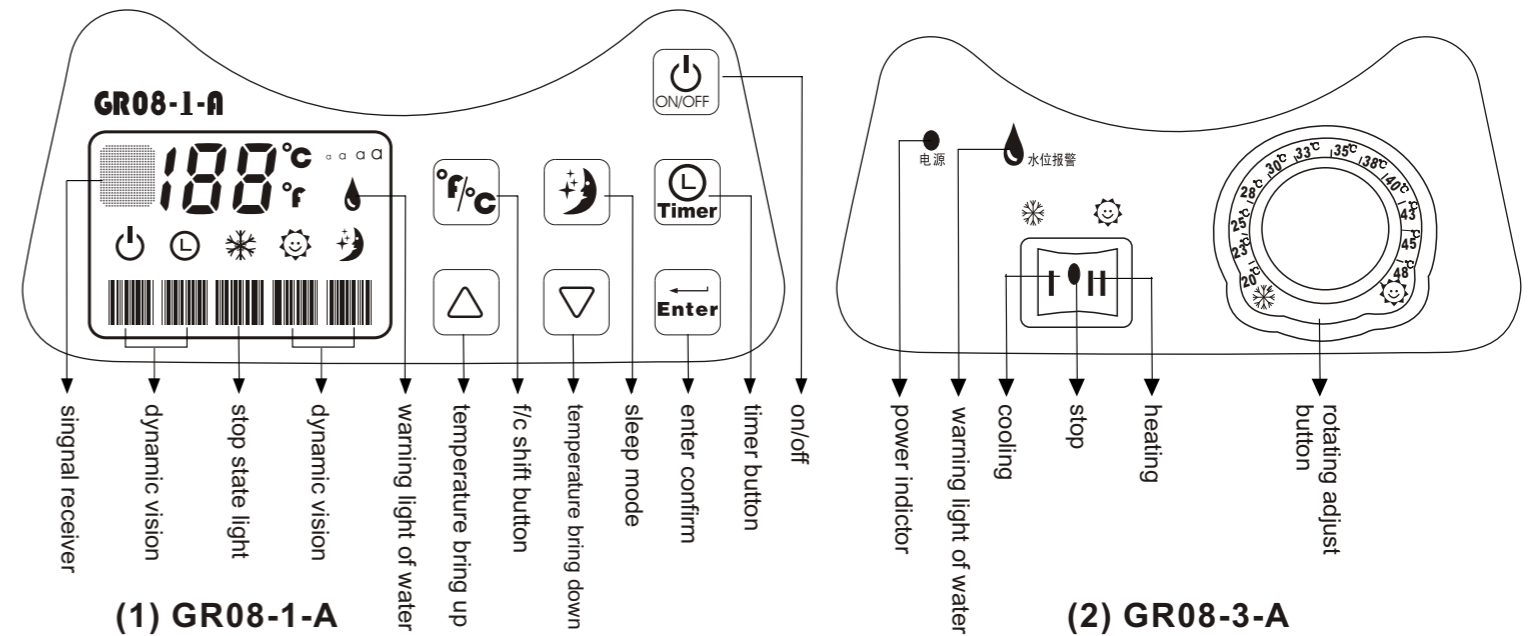
Notes : 1. Water spill into inside of control unit and operation board is prohibited.

2. Must refill water when water level in water tank is under warning level (2/3 of tank) or warning light is on, make sure control unit can work normally.

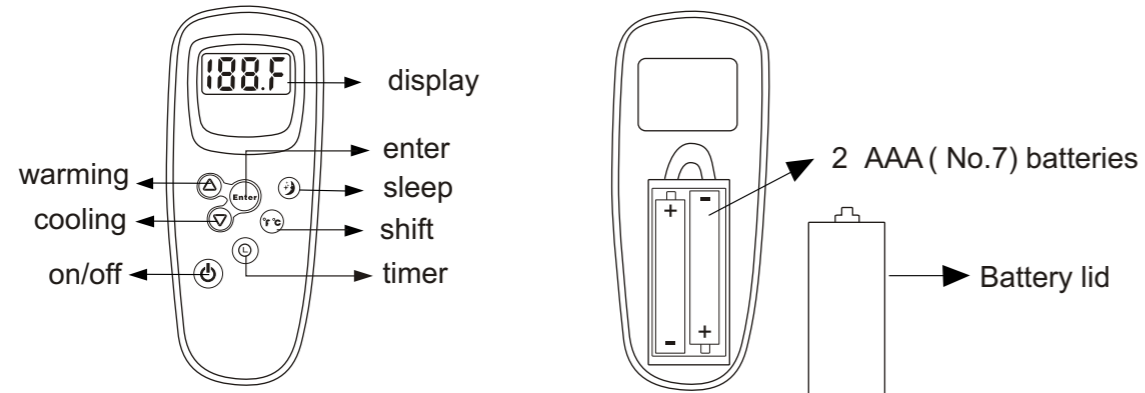


### D. Control unit/remote control marks and directives

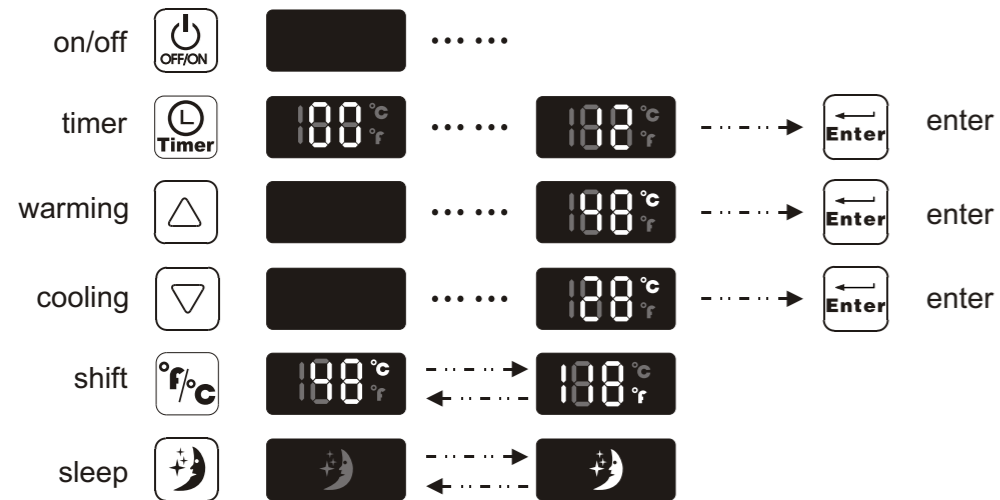
#### 1. Control unit/remote control marks



## SET UP



### 2. Control unit/remote control operation



### 3. Control unit marks and light.

Control unit marks and light.									
						twinkle	• • • •	f/c	
stop state	water warning	power	timer	warming	cooling	enter	frequency	shift	sleeping mode

## SET UP

### E. Machine/remote controller function reset

	Turn on the control unit and set the temperature according to environmental temperature and personal requirement, press  button to bring up temperature, press  to bring down the temperature, press once is bring up or down 1 degree, if keep pressure on / is going up or down non-stop to user demanded temperature, and then press  button. Rotating button adjust type is rotate the button to user demanded temperature
	In hot summer, no matter how cold user set the control unit, as long as you press  button, the control unit will go back to above 31°C from cooling state. In cold winter, no matter how warm user set the control unit, as long as you press  button, the control will go back to under 36°C from warming state.
	Press  button, the control will shift between Fahrenheit and celsius when control is working normally. ( do not need to press enter button)
	When control unit is not working, press  button one press an hour to time the control unit to user requirement like 12, 11, 10, ..... 2,1 hours, then press  to confirm, the control unit will utter a beep sound when it receive the signal, the control unit will power on automatically as user seted time, if user want to cancel, just need to set the number to 00, and press  to confirm.  When control unit is working, press  button one press an hour to time the control unit to user requirement like 12, 11, 10, .....2,1 hours, then press  to confirm, the control unit will utter a beep sound when it receive the signal, the control unit will power off automatically as user seted time, if user want to cancel, just need to set the number to 00, and press  to confirm.
	Press  button to control the power on or off rotating button adjust type press boat shape button to turn on or off

Note: please cut off the power if user do not use for long time.